

Bringing big screen 4K UHD into the mainstream

P506QLG



Taking 4K laser projection into new frontiers with a unique combination of brightness and function.

Powerful Performance

- Native 4K UHD (3840 x 2160) resolution produces stunning images with incredible detail
- After startup images appear immediately with breakthrough laser technology
- Advanced laser technology delivers a reliable, maintenance free light source for 20,000 hours
- Integrated software support for Crestron Roomview, AMX Beacon, PJ Link control systems



4K UHD Resolution

- Utilizing the latest DMD chip from Texas Instruments with pixel shift capabilities resulting in an unsurpassed viewable resolution of 8.3million pixels
- Viewable resolution matches standard 4K UHD LCD displays providing consistency when developing content for your presentations



Advanced Connectivity



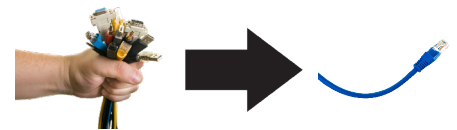
More Flexible Installations

- Lens shift capabilities make alignment easy: (H = +/- 20% / V = +/-60)
- Tilt-free installation capabilities make these projectors ideal for almost any install environment, including portrait orientation



Built-In HDBaseT Support

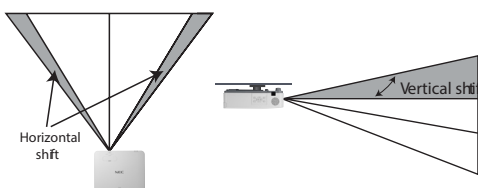
Simplify your installations with HDBaseT. Optimized for video applications and supporting uncompressed digital video, audio, ethernet and various control signals. With only a single cable (up to 100m) to run, infrastructure and labor costs are reduced, installations are significantly easier, and there is no cable clutter to manage.



Advanced Installation Features

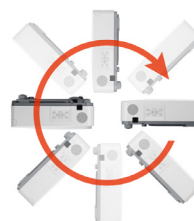
Lens Shift

Lens shift provides greater flexibility when determining install location.



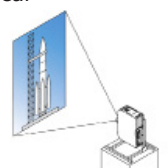
Tilt-free

The projector can be rotated freely (360°) to orient the image depending on the installation requirements.



Portrait Mode

Allows the projector to be rotated (and screen if necessary) to a vertical alignment so that portrait content can be viewed without black bars on the side when landscape mode is used.



Unique Features

Advanced AccuBlend™ ensures detailed images when non-native resolution sources are connected to the projector

AutoSense™ automatically syncs with any computer signal and features one-touch image optimization

Discreet source keys for source selection

Remote diagnostics enable the user to monitor and make adjustments to the projector remotely

Built-in HTTP page for control and monitoring over a LAN network. Email notification of error messages or lamp end-of-life can be sent to remote locations.

Ships With

Remote control, batteries, power cord, user's manual on CD-ROM, quick start guide, product registration card.

Ordering Model Numbers

NP-P506QLG



		P506QLG
Display Technology		DLP (0.47" DMD)
Light Output (lumens)	Center	5200
	ECO mode OFF	5000
	ECO mode	3000
Resolution	Native	4K UHD (3840 x 2160)
	Maximum	Up to 4K@60Hz (3840x2160) for HDMI
Contrast Ratio (up to)		500,000:1
Laser Life (50%)		20,000 hours
Screen Size (diagonal)		50 - 310 in. / 1.27 - 7.87m
Projection Distance		5.2 - 26.2 ft. / 1.6 - 8m
Projection Angle		25.46° tele / 34.5° wide
Lens	Zoom	Manual
	Zoom Ratio	1.5x
	Throw Ratio	1.127 - 1.697:1
	Focus	Manual
	F-number, focal length	F=1.8~2.43 / f=12.1~18.1mm
	Shift	Manual (H = +/- 20% / V = +/- 60)
Keystone Correction		Vertical
Synchronization Range	Horizontal	15.734KHz ~ 153kHz (RGB: Hz, 24 ~ 100KHz)
	Vertical	48 ~ 100, 120Hz
SD/HD Video Signal Compatibility		4K UHD, 1080p, 1080i, 720p, 576p, 576i, 480p, 480i
PC Signal Compatibility		VGA, SVGA, XGA, WXGA, Quad-VGA, SXGA, SXGA+, WXGA+, UXGA, WSXGA+, HD, FHD
Macintosh Compatibility		Yes
Input Terminals	RGB1 (analog)	VGA 15-pin D-sub
	RGB2 (digital)	HDMI w/ HDCP (v2.0)
	RGB3 (digital)	HDMI w/ HDCP (v2.0)
	RGB4 (digital)	HDBaseT
	Audio1	Stereo Mini Jack
Output Terminals	3D Sync	mini DIN 3-pin
	Audio Out	Stereo Mini Jack
Wired LAN port		RJ45 (100Base-TX/10Base-T)
USB	Type A	5V/2.0A power
	Mini	Service
External Control		RS-232 (D-Sub 9pin), IR, RJ45
Built-in Speaker		10W
Power Requirements		100-240V AC, 50/60 Hz
Input Current		6A
Power Consumption (ECO Mode Off/ECO Mode/Network Standby/Normal Standby)		580W / 330W / 2W / 0.5W
Installation Orientation		Floor/Front, Floor/Rear, Ceiling/Front, Ceiling/Rear
Product Dimensions (WxHxD)		18.9 x 6.8 x 15.7 in. (480 x 172 x 400 mm)
Net Weight		25.4 lbs. (11.5 kg)
Shipping Dimensions (WxHxD)		23.2 x 11.7 x 19.3 in. (590 x 297 x 490 mm)
Gross Weight		32.0 lbs. (14.5 kg)
Fan Noise		35dB (ECO mode Off), 32dB (ECO mode)
Regulations		UL60950-1:2nd edition,2014, UL62368-1:2nd Edition, UL62368-1:3rd Edition, FDA, FCC Part15 Subpart B(ANSI C63.4:2014), Proposition65, TPCH, CAN/CSA C22.2 No.62368-1-14,2nd Edition,2014, ICES-003 Issue6(ANSI C63.4:2014)
Operating Temperature		41-104°F / 5-40°C
Humidity		20-80% non-condensing
Storage		14° - 122°F / -10° - 50°C

Talk to us about your needs today. Contact us at +65 6273 8333 or multimedia@nec.com.sg.

SINGAPORE
NEC Asia Pacific Pte Ltd
(Regional Headquarters)
sg.nec.com



SCAN ME

Scan the QR code to head to our APAC site for more information on our solutions and products. Follow us on these platforms for updates.



Indonesia
PT, NEC Indonesia
id.nec.com

Malaysia
NEC Corporation of Malaysia Sdn. Bhd.
my.nec.com

Philippines
NEC Philippines, Inc.
ph.nec.com

Thailand
NEC Corporation (Thailand) Ltd.
th.nec.com

Vietnam
NEC Vietnam Co, Ltd.
vn.nec.com