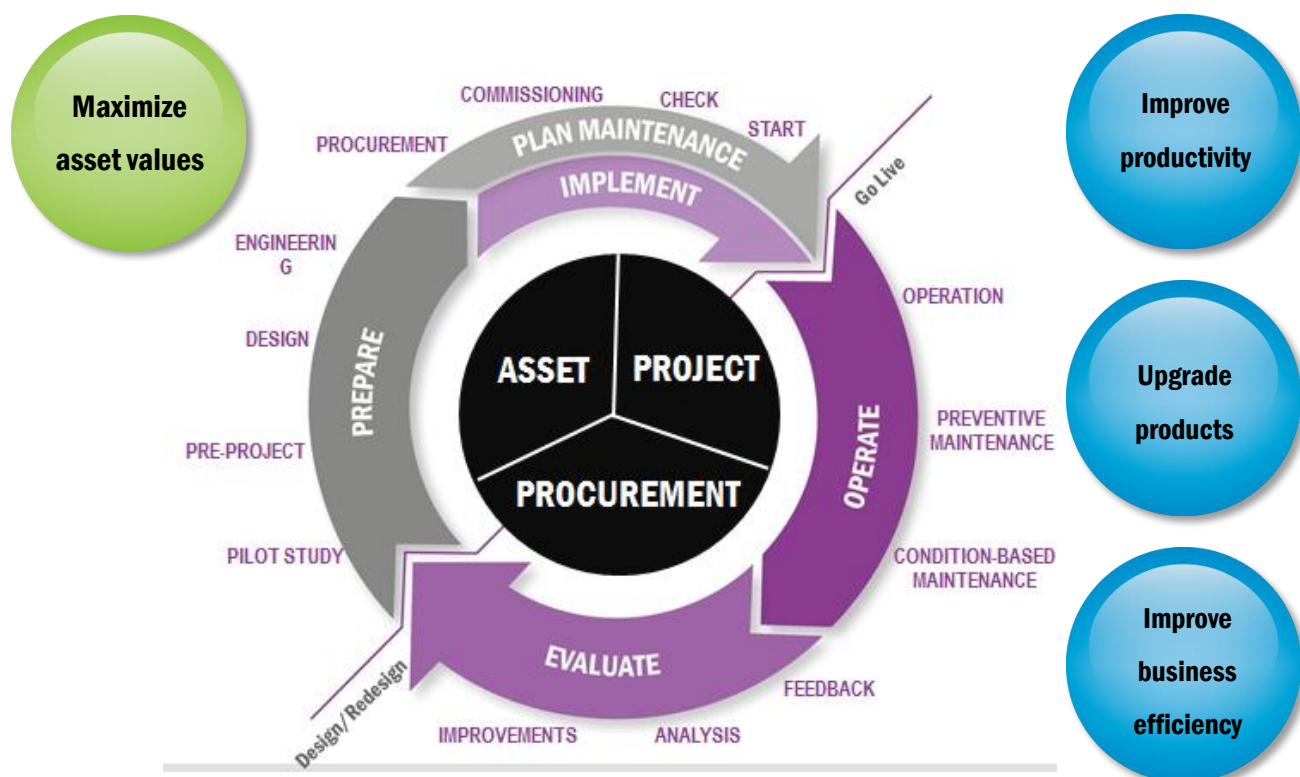


Enterprise Asset Management Solution

IFS Applications™ has a wide scope of functionality from Computerized Maintenance Management Software (CMMS) to Asset Lifecycle Management (ALM) that can support every single process of the asset lifecycle - from design to engineering, procurement and maintenance management. Now, imagine being able to reduce the lifecycle cost of managing assets and asset information in a totally integrated and open asset lifecycle management solution.



Asset Lifecycle Management (ALM) of Facilities



“Investment”, “Cost”, “Quality”, “Efficiency” — We provide information for the best balance of your business.

- Maintenance database storing equipment information as a key data organically connected to work history and documents.
- Preventive maintenance plan and ordering according to plan.
- Resource (labor) plan and work management based on material procurement.
- Accurate preventive maintenance (TBM/CBM) function.
- Analyze increasing maintenance cost due to time-related degradation.
- Asset lifecycle management (ALM) at a higher level.

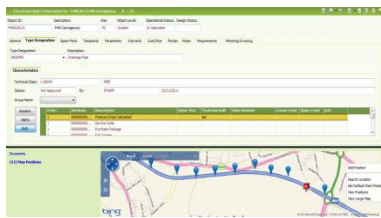
IFS Enterprise Asset Management Solution

Combination with plant design

Saves design data of plant facility since planning stage through design, procurement and construction process, and link the information with maintenance data for asset lifecycle management.

Integrated management of facility information

Stores various information target facilities and machines of maintenance. IFS Applications arrange information on facility composition hierarchically so that you can access maintenance information of the facility you are looking for right away.



Periodic Inspection/Preventive maintenance

Inspection and maintenance are crucial for high quality, efficient production/human operation and safe operation of facilities/machines. The solution manages overall planned maintenance operations like planning of inspection or maintenance based on maintenance standards, pre-order of components and materials and workforce planning. Supports latest CBM (Condition Based Maintenance) function.

Work order management

You can manage information integrally in work order from offering to completing of the order. In work order, operation, labor, material and schedule are defined to assist smooth work. You can record work report for cause, solution and grouping, and used for reference and analysis. Cost management by work order is available too.

Document management

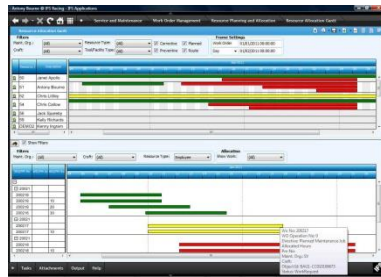
You can store documents required for maintenance such as drawings and instructions. Check-in/out, version control, search functions are equipped so that you can access document you need in operation process by linking setting to facility/machine information.

Linkage with control system

We provide self maintenance environment by acquisition of operation data and operator's seamless access to facility and maintenance information through integration with on-site control system like DCS or SCADA.

Workforce/work schedule

Supports planning work order. You can assign staff equipped with required skills by search function. Gantt chart visually helps you to arrange labor and schedule accurately.



Spare parts maintenance/order

Realizes efficient inventory management of various components and materials for maintenance service. We offer you not only basic functions such as stock inquiry/availability check and material arrangement from work order and inventory replenishment order, but also functions like serial number management and tracking of special components and management of refurbished parts (by conditions), which have several cost under the same inventory number.

Overall equipment effectiveness (OEE)

It is one of the major challenges in manufacturing industry to maximize productivity with maintaining quality of the product. OEE is the solution mainly based on APQ analysis, which checks overall equipment effectiveness of the facility in terms of amount of production, machine downtime and product quality. It visualizes various information on OEE for analysis.



Work report, history accumulation

We offer integration function to mobile terminals in addition to web function so that you can record work report any time, anywhere. You can easily find solve problems by checking information of work implementation accumulated per work unit in terms of working time and cost.

Cost management (account linkage)

Calculates cost by generating journal data from reported work time, material and expenses. It accumulates operational cost of the facility/machine to report annual maintenance cost of every facility.

Data analysis, Index management

"IFS business performance is a balance scorecard tool to manage operation visually by KPI. We offer KPI (scheduled maintenance rate, MTTR etc.) essential for managing performance of maintenance service business as standard function to support starting business smoothly. Easy data extraction to spreadsheet program and HTML output helps flexible data analysis.



Portal by roles

You can build individual web portal with high visibility of information depending on his/her duties. We offer flexible composition of screens such as progress status and work delay screens for managers, and work list and work report screens for service staff. Collaboration portal which can have the same function is ready for business partners.

Mobile

You can acquire latest information and take care of operations such as "accept work order", "report work performance" and "check/order inventory" anytime, anywhere promptly and accurately by mobile devices like laptop or tablet. We offer integration function to mobile terminal which can be used online/offline by considering transmission status.

Contact (Distributed by)

NEC

NEC Corporation of Malaysia Sdn. Bhd.
Suite 20.01, Level 20, The Gardens North Tower,
Mid Valley City, Lingkaran Syed Putra,
59200 Kuala Lumpur, Malaysia
Tel: +6-03-2299-6322 Fax: +6-03-2299-6323

Developed by

IFS

IFS
<http://www.IFSWORLD.com>

