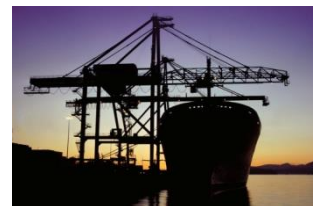
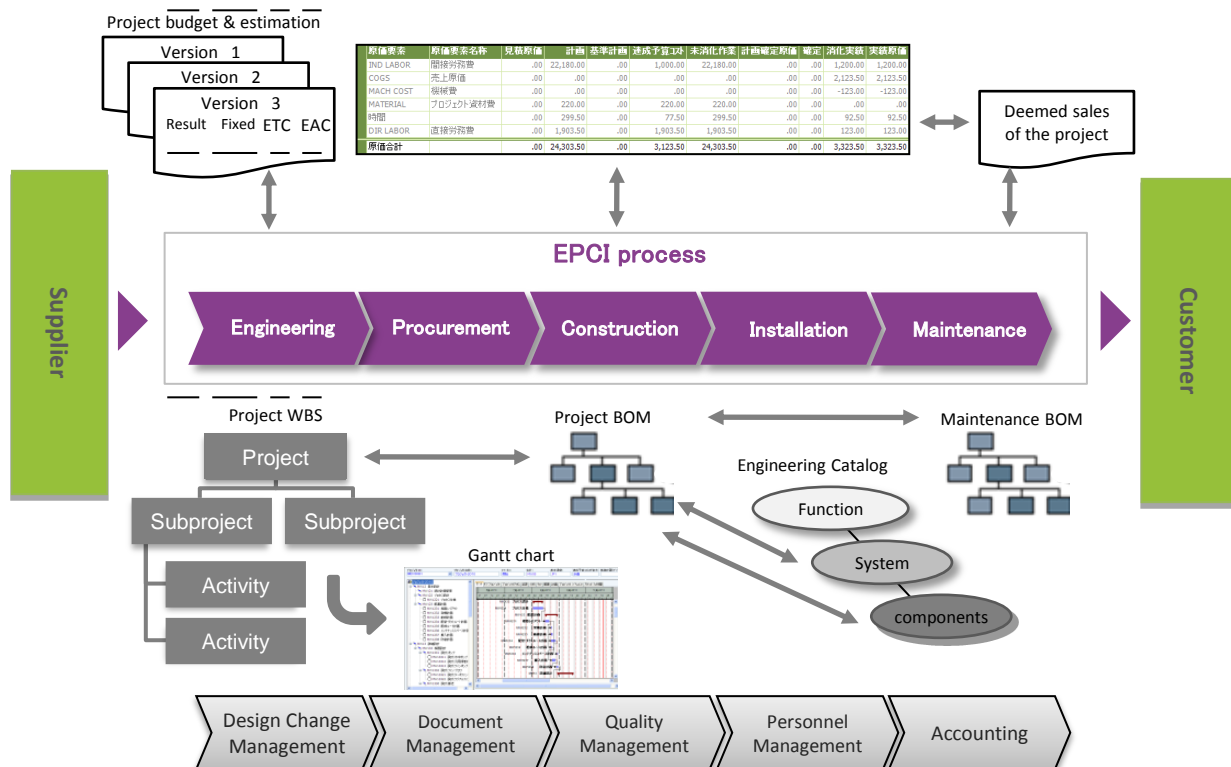


IFS Solution for EPCI Industry

We offer an integrated, proven project-driven solution supporting the whole project lifecycle from engineering and procurement to construction/installation and maintenance.



Manage operations efficiently

- Interface tools for computer - aided design (CAD) applications helps smooth import of design information.
- Design change management provides impact analysis and management of revision history and release date.
- Whole project and individual subprojects are controllable by setting projects by class.
- All orders in work instruction, procurement and manufacturing orders are centrally managed by project ID, which enables us to get the project status easily.
- Requirement planning and inventory management by project unit.

Analyze cost easily

- Forecasting & Project Accounting – enables users to conduct cut-offs and forecasting in your projects independent of financial periods.
- Project accounting function assists account management based on project budget, actual performance, WIP and profit.
- Manage cost of the entire project and subprojects by setting project class.
- Allocation of cost between projects is available.
- Project budget is managed by version, and we can monitor several budget transactions such as original budget, revised budget and final budget.

IFS Solution for EPCI Industry

PDM Integration

Supports engineering design, configuration control, and follow-up of items and products. Advanced revision management capabilities help you comply with complex regulations. Its powerful "best-fit" search and copy functionality lets you reuse items and designs, making it easier to standardize products and parts. Several CAD tools can share functions with standardized PDM data.

Project delivery structure management

You can create project delivery structure for new project by copying standard and past cases. For many purposes, design BOM can be developed to project BOM, and that can also be developed to service BOM. Service BOM is produced by project BOM at shipment of the product, and will be developed in maintenance service in accordance with contract. This component is graphically shown to check information easily.

Project Item control

Gives project item number to facilities. All processes can be controlled under this number from ordering of parts and manufacturing of the product to budget and actual performance control of cost. It matches the project item numbers to purchase order and manufacture order through MRP, which manages prices and progress status. It also matches numbers with project activities, which manages the whole project and each unit.

Project material requirement planning (P-MRP)

Controls inventory of materials required for construction by project. It has functions for inventory evaluation method and lot/serial control, and totally manage inventories including finished goods in case of companywide usage. In production plan, it prepares required parts matched to manufacture order with taking lead time of supplier into consideration to avoid operations getting delayed.

Procurement management

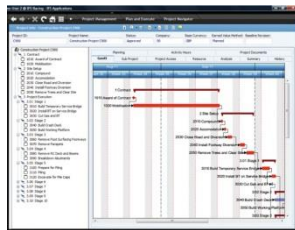
Create and match purchasing order by manual, project MRP, order processing and customer order. You can arrange parts and materials from several suppliers. Combining with MRP, it automatically chooses supplier. Also manages request and answer of quotation from suppliers. You can order without item's part number.

Project management

Allows you to create projects using user-defined Work Breakdown Structures (WBS). Templates can be used to establish business process consistency. Costs, revenue, hours and quantities can be associated with the project WBS. The Projects component holds the project plan, which is then used to generate the sub-plans for other areas such as procurement, engineering, manufacturing, installation and construction.

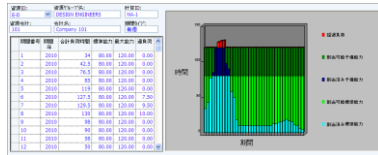
Project gantt chart

Assists to plan work schedule according to operation orders. Matches requirements and staff skills to allocate personnel accurately. Gantt chart is available for scheduling, which helps planning visually and increases usability.



Capacity requirements planning

It provides resource (machine and staff) load information required for the project to support scheduling efficiently. Timely load information linked to latest work plan arrangement and progress status ensures better management of resources.



Project cost management

Provides you with comprehensive functionality to manage project cost control. User-definable project forecast types enable you to support multiple versions of project estimates, budgets, forecasts, reviews, etc. The system supports Estimate to Complete (ETC) and Estimate at Complete (EAC) principles. Budgets can be controlled by cost (CBS) and work (WBS) breakdown structures. Spreading rules are available, including S Curves and Straight Line logic.

Work report, history accumulation

Manual report, barcode report, report by individual staff and by each operation are available. Work report automatically produces actual work performance data and renew work status. It also adds up actual cost automatically at reporting time.

Deemed sales

In case of long term projects, calculation of estimated sales is required according to task progress. IFS covers redeemed sales based on various settings like task progress.

Maintenance

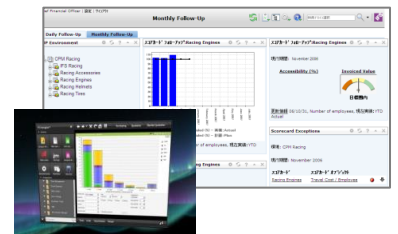
Plans and manages periodical maintenance operation and preventive maintenance work to prevent machine problem and ensure safe operations. Manages the whole maintenance operations such as preparing required parts and assigning of staff. Produces new project for major renovation to manage budget.

Document management

Gives you full control over your company's documentation. It handles the creation and development process for documents and includes easy-to-use search tools. Attach drawings and instructions where needed such as maintenance subjects and operation orders to standardize and streamline operations.

Information Integration, Data analysis

It shows various data accumulated by a series of processes as balanced scorecard by "IFS business performance". Assists flexible data analysis through easy data extraction to spread sheet software and HTML output. Various user interfaces such as enterprise explorer, web portal and mobile are ready to use so you can report and check progress status of the site in remote location.



Contact (Distributed by)

NEC

NEC Corporation of Malaysia Sdn. Bhd.
Suite 20.01, Level 20, The Gardens North Tower,
Mid Valley City, Lingkaran Syed Putra,
59200 Kuala Lumpur, Malaysia
Tel: +6-03-2299-6322 Fax: +6-03-2299-6323

Developed by



IFS
<http://www.IFSWORLD.com>

